

# VBOX-3630R-M12X

Intel® 11th Gen Core™ i7-1185G7E CPU with 4 x LAN  
In-Vehicle Computer

## Features

- Intel® 11th Gen Core™ i7-1185G7E
- Supports Dual 5G / LTE, GPS, Wi-Fi / BT and CAN Bus Modules
- Isolated DC Input 24 ~ 110VDC for Rolling Stock Applications
- 1 x 2.5GbE + 3 x GbE LAN Port with M12X Connectors
- Supports 4 Independent Display Outputs: 2 x HDMI, 1 x DP, 1 x DVI-D
- Supports Optional Battery Backup Kit
- EN 50155 Certified



## Introduction

VBOX-3630R-M12X is a fanless in-vehicle computer with 5G connectivity, and it utilizes 11th Gen Intel® Core™ i7-1185G7E CPU up to 4.4GHz. It features an ultra-compact design measuring 365 x 165 x 55 mm, which can easily fit into restricted spaces. The system can select Dual 5G / LTE, GPS, and Wi-Fi / Bluetooth as robust connectivity by M.2 modules. It is a building-in with four independent display outputs, audio line-out, and microphone-in. It is the perfect solution for fleet management, in-vehicle digital signage, and mobile DVR. Furthermore, it features Smarter Vehicle Power Ignition and wireless remote control in various vehicles. VBOX-3630R-M12X can effectively support cars in extreme weather and operating conditions.

## Specifications

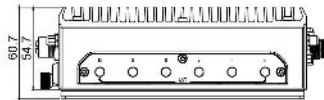
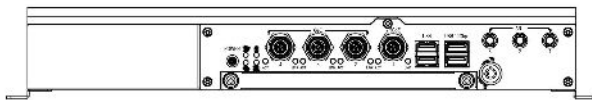
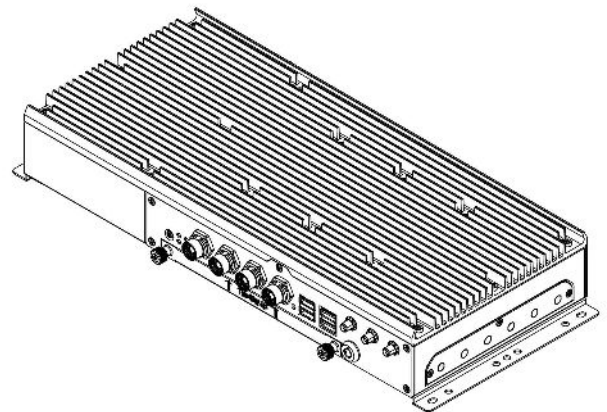
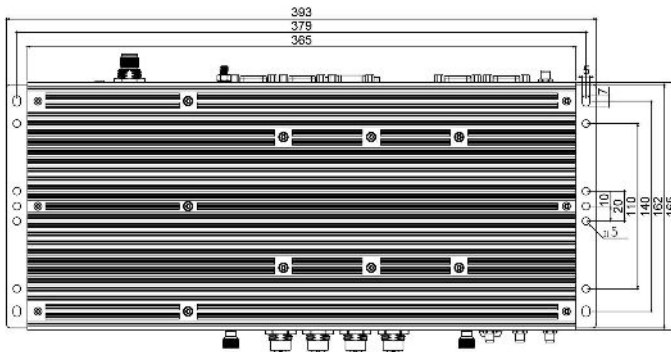
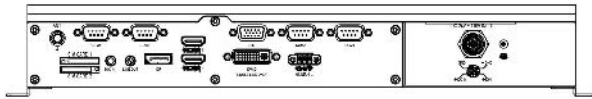
System	
CPU	Intel® 11th Gen Core™ i7-1185G7E 1.8GHz up to 4.4GHz Intel® 11th Gen Core™ i5-1145G7E 1.5GHz up to 4.1GHz Intel® 11th Gen Core™ i3-1115G4E 2.2GHz up to 3.9GHz Intel® Celeron® 6305E up to 1.8GHz
Memory	2x DDR4-3200 SO-DIMM Up to 64GB
LAN	1x Intel® 2.5GbE Supports mGig Supports iAMT and PXE LAN Boot ROM 3x Intel® I210-AT Gigabit Ethernet
Watchdog	Watchdog Timer Support, Offer 1 – 255 Step
TPM	2.0
I/O	
USB	2 x USB 3.2 Gen 2 (10 Gbps) 2 x USB 2.0
LAN	1 x 2.5GbE, 3 x GbE with M12 X-Coded Connectors (Max. Power Budget for VBOX-3630RP)
DIO	6 x DI (5~60V) and 4 x DO (5V/100mA) (Optional: 2x 12V/1A Output)
Audio	1 x Line-out and 1 x Mic-in (Optional: Line-in)
Video	2 x HDMI, 1 x DP, 1 x DVI-D* (Supports 4 Independent Display) * Use only with Single Link DVI Cables.
Expansion Bus	1 x Combo Port (1x M.2 3042/52 Key B or 1 x mPCIe Full Card) 1 x M.2 2230 Key A-E, 1 x mPCIe Full Size (USB function only)
Antenna	7 x Pre-cut Holes for External SMA Antenna
SIM Card Socket	2 x SIM Card Sockets Supported Onboard with Eject
Serial Port	4 x RS-232/422/485 (Auto Direction Control) (3 Ports for M12 Model)
Storage	
Type	2 x 2.5" Drive Bay for SATA Type HDD/SSD 1 x M.2 2280 Key M for NVMe SSD
Software	
Operating System	Windows 10 IoT LTSC (64-bit), Windows 11 IoT (64-bit) Linux Ubuntu 20.04 (64-bit), 22.04 (64-bit)

Graphics	
Graphics	Intel® Iris® Xe Graphics / Intel® UHD Graphics
Resolution	Max Resolution (HDMI 2.0b) : 4096 x 2304@60Hz Max Resolution (DP) : 4096 x 2304@60Hz
Environmental	
Operating Temp.	-40 ~ 70°C, ambient w/ 0.6m/s airflow Patent No. M448011-Thermal Cooling
Storage Temp.	-40 ~ 85°C
Relative Humidity	10% ~ 90% RH (non-condensing)
Vibration (with SSD)	IEC60068-2-64, random, 2.5G@5~500Hz, 1hr/axis MIL-STD-810G, Method 514.6, Procedure I, Cat.4, Operating
Shock	Operating: MIL-STD-810G, Method 514.6, Procedure I, Trucks and semi-trailers 15G (11ms with SSD)
Certifications	CE, FCC Class A, EN50155, EN45545-2 (R25)
Power Requirement	
Power Input	Isolated DC Input 24-110VDC for Rolling Stock
Power Protection	Automatics Recovery Short Circuit Protection
Power Mgmt.	Power Ignition for Vehicles
Power Off Control	Power Off Delay Time Setting by Software
UPS	Internal Battery Kit for 10 Mins Operating (Optional, Discharge Temp. -20~60°C) *UPS backup time varies depending on actual overall system power consumption. Patent No. : M447854 - Build-in Battery
Mechanical	
Construction	Aluminum Alloy
Mounting	Wall-mount
Weight	3,800g (Barebone)
Dimensions	365(L) x 165(W) x 55(H) mm

All specifications are subject to change without notice.

## Dimensions

Unit : mm



## Ordering Information

Part Number	VBOX-3630Rx-M12X-zz (x=P=w/PoE, PoE Only Available for i7 and i5 Models) (zz=i7=i7-1185G7E, zz=i5=i5-1145G7E, zz=i3=i3-1115G4E, zz=C1=6305E)
Description	Intel® 11th Gen Core i7-1185G7E CPU with 4 x LAN On-Board Computer
State of Origin	Made in Taiwan

## Optional Accessories

DRAM	DDR4 SO-DIMM 3200 8GB~32GB (-40~85°C)
SSD	2.5 inch SATA SSD TLC 64GB~1TB (-40~85°C) M.2 2280 NVMe 256GB~1TB TLC (-40~85°C)
Wi-Fi Module	M.2 2230 Wi-Fi 6 + Bluetooth 5.2 Module
WWAN Modem	M.2 3042/52 5G / LTE Modem
GPS	mPCIe GPS Module
CAN Bus	mPCIe CAN Bus Module
Battery Backup Kit	BAT-3630 Kit, 2,300mAh 3S1P Battery Kit (-20~60°C for Discharge)

All specifications are subject to change without notice.