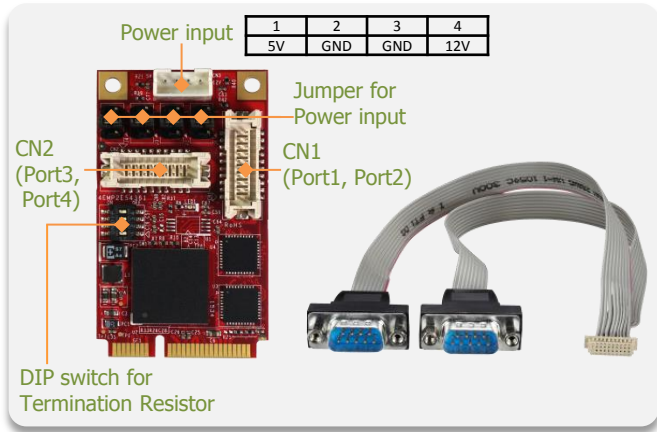


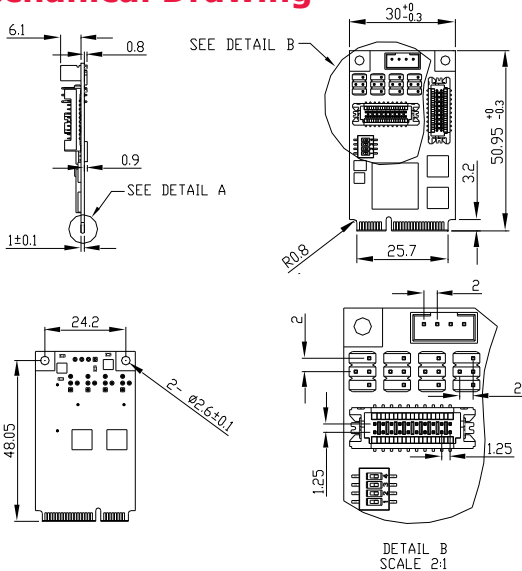
EMP2-X404 mPCIe to four RS-232/422/485 Module



Features

- PCIe 2.0 compliant. RS-232/422/485 mode configurable by software.
- Up to 1 Mbps RS232 and 15 Mbps RS422/485 serial data rate. 16C550 compatible. 256-byte FIFOs
- Industrial temperature(-40 °C to 85 °C) operation.
- Full RS-232 functions with DB9 connector
- Minimize possible mechanical intervention without daughterboard
- Termination resistor enabled/disabled by DIP switch
- RI/5V/12V output switched by Jumper.
- ESD(Electrostatic Discharge) protection circuit to prevent system damage.
- 30μ" golden finger, 3-year warranty.
- Industrial design, manufactured in innodisk Taiwan

Mechanical Drawing



DIP Switch Setting	
OFF	Normal
ON	Termination

Jumper Setting	
RI	
5V	
12V	

DB9 Pin define			
Pin	RS-232	RS-485/RS-422	RS-485
		full duplex	half duplex
1	DCD	TX-	D-
2	RX	TX+	D+
3	TX	RX+	
4	DTR	RX-	
5	GND	GND	GND
6	DSR		
7	RTS		
8	CTS		
9	RI/5V/12V	5V/12V	5V/12V

Specifications

Headquarters (Taiwan)
5F., No.237, Sec. 1, Datong Rd.,
Xizhi Dist., New Taipei City 221,
Taiwan

Tel: +886-2-7703-3000
Email: sales@innodisk.com

Branch Offices:

USA
usasales@innodisk.com
+1-510-770-9421

Europe
eusales@innodisk.com
+31-040-3045-400

Japan
jpsales@innodisk.com
+81-3-6667-0161

China
sales_cn@innodisk.com
+86-755-2167-3689

www.innodisk.com

© 2018 Innodisk Corporation.
All right reserved. Specifications
are subject to change without
prior notice.

October 1, 2018

Form-Factor	mPCIe
Input I/F	PCI Express 2.0 x 1
Output I/F	RS-232/422/485
Output Connector	DB-9 x 4
Max TDP	0.5W (3.3V x 150mA)
Dimension (WxLxH)	30 x 50.9 x 8mm
Temperature	Operation: W/T: -40°C ~ +85°C Storage: -55°C ~ +95°C
Environment	Vibration: 5G @7~2000Hz, Shock: 50G @ 0.5ms
Notes	Please download driver from MyInnodisk website. Windows: XP(32 bit), 7(32/64 bit), 8/8.1(32/64 bit), 10, WES7, CE7.0 Linux: Kernel 2.6.x and above.(We can provide Linux source for modification.)

Order information

EMP2-X404-W1(Wide Temp.)
mPCIe to four RS232/422/485 Module

ICP Electronics
Australia Pty Ltd

TEL: 02 9457 6011
sales@icp-australia.com.au
www.icp-australia.com.au

