



### Features

- XP-8x49-CE6: LX800, 500 MHz CPU  
XP-8x49-Atom-CE6: Atom Z510, 1.1 GHz CPU
- Pre-installed InduSoft Web Studio Runtime
- Windows CE 6.0 R3 Core
- Hard Real-Time Capability
- VGA Port Output
- Modbus RTU/TCP (Master, Slave)
- Support eLogger or Soft-GRAF HMI
- Redundant Power Inputs
- Operating Temperature: -25 ~ +75°C



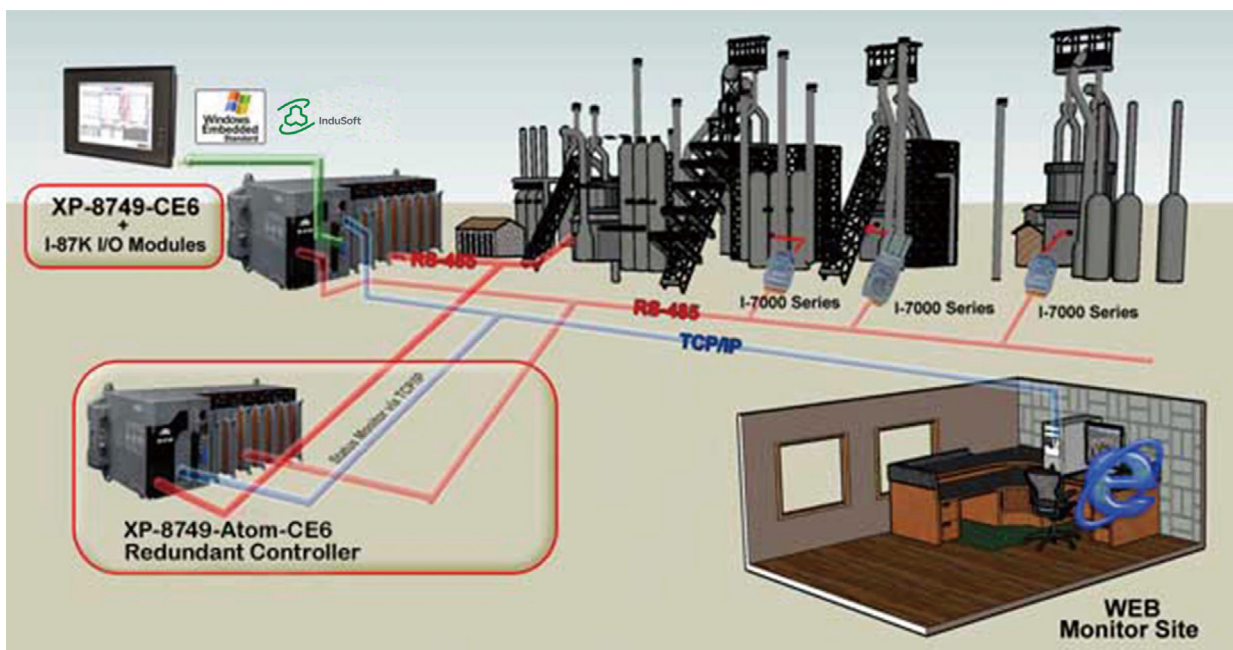
### Introduction

**XP-8x49-CE6/XP-8x49-Atom-CE6 Series** is the new generation Windows CE 6.0 based PAC (Programmable Automation Controller) of ICP DAS. It features with the **powerful InduSoft Web Studio**. **XP-8000-CE6** Series is equipped with an AMD LX800 CPU (500 MHz), various connectivity (VGA, USB, Ethernet, RS-232/485) and 0/3/7 I/O slots for high performance parallel I/O modules (high proT le I-8K Series) and serial I/O modules (high proT le I-87K series). **XP-8000-Atom-CE6** series equips a Intel Atom Z500 Series, variant connectivity (VGA, USB, Ethernet, RS-232/RS-485), and 1/3/7 slots for high performance parallel I/O modules (high profile I-8K series) and serial-type I/O modules (high profile I-87K I/O modules).

The benefits of running Windows CE 6.0 on XPAC include hard real-time capability, small core size, fast boot speed, interrupt handling at a deeper level and achievable deterministic control. XPAC is also capable of running PC-based control software such as Visual Basic .NET, Visual C#,.... etc. It has all of the best features of both traditional PLCs and Windows capable PCs.

### Applications

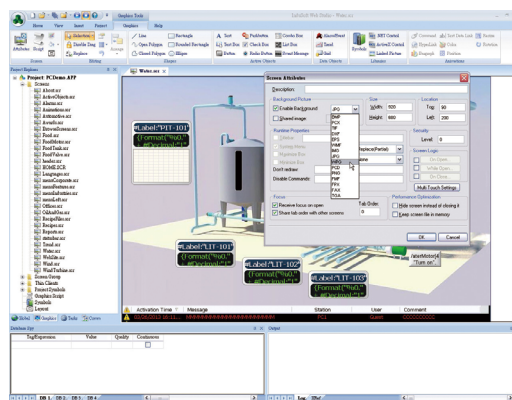
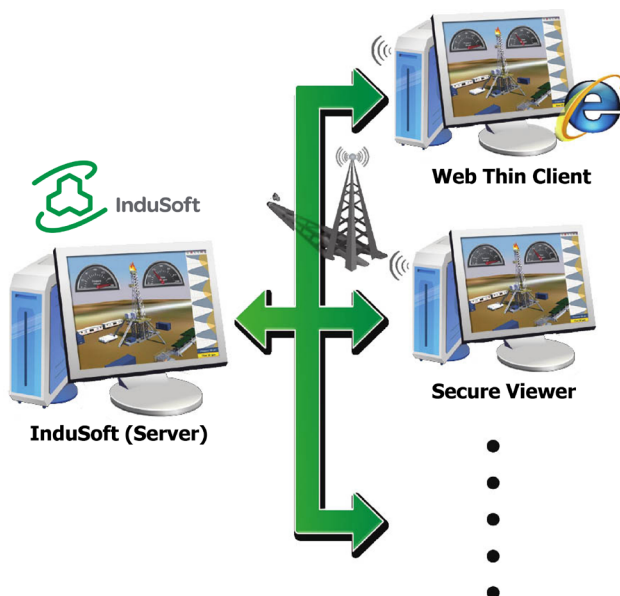
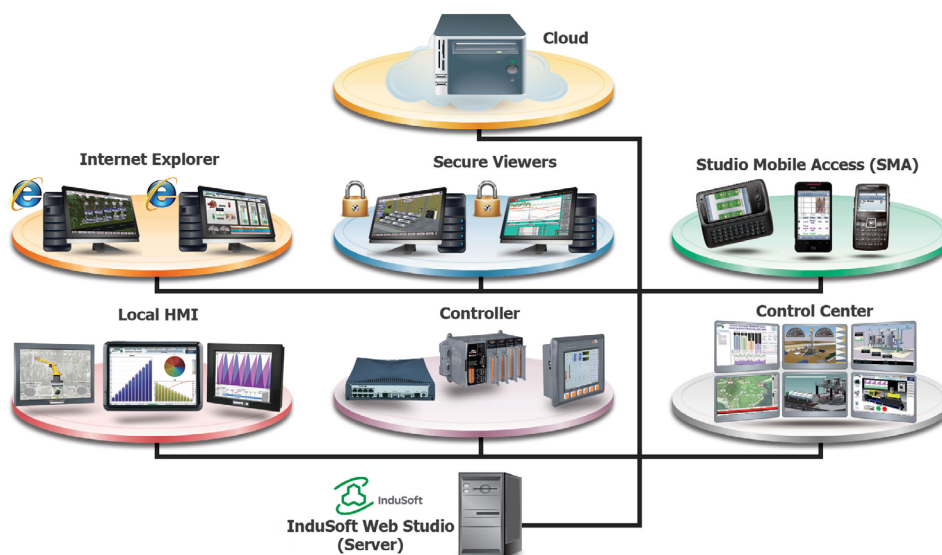
Environment monitoring, factory automation, building management system, industrial machine control, etc.



## InduSoft Features

IWS applications run on microcomputers connected in real-time to machines or processors through WinPAC programmable controllers, remote I/O devices, and other data acquisition equipment. These applications consist of animated operator-interface screens, rollable I/O devices, an application tags database, and optional modules such as alarm monitors, trend charts, recipes, schedulers, and a security system.

- Intuitive script language with more than 100 standard functions is provided.
- Conform to industry standards such as Microsoft.NET, OPC, DDE, ODBC, XML.
- Full-Featured WinCE-based run-time environment (CE View).
- Dynamic library of symbols - customizable.
- ActiveX container (Windows NT/CE).
- Automatic e-mail (SMTP) and dial-up connection interface supported.
- Provide multi-level security for applications, including the Internet and Intranet.

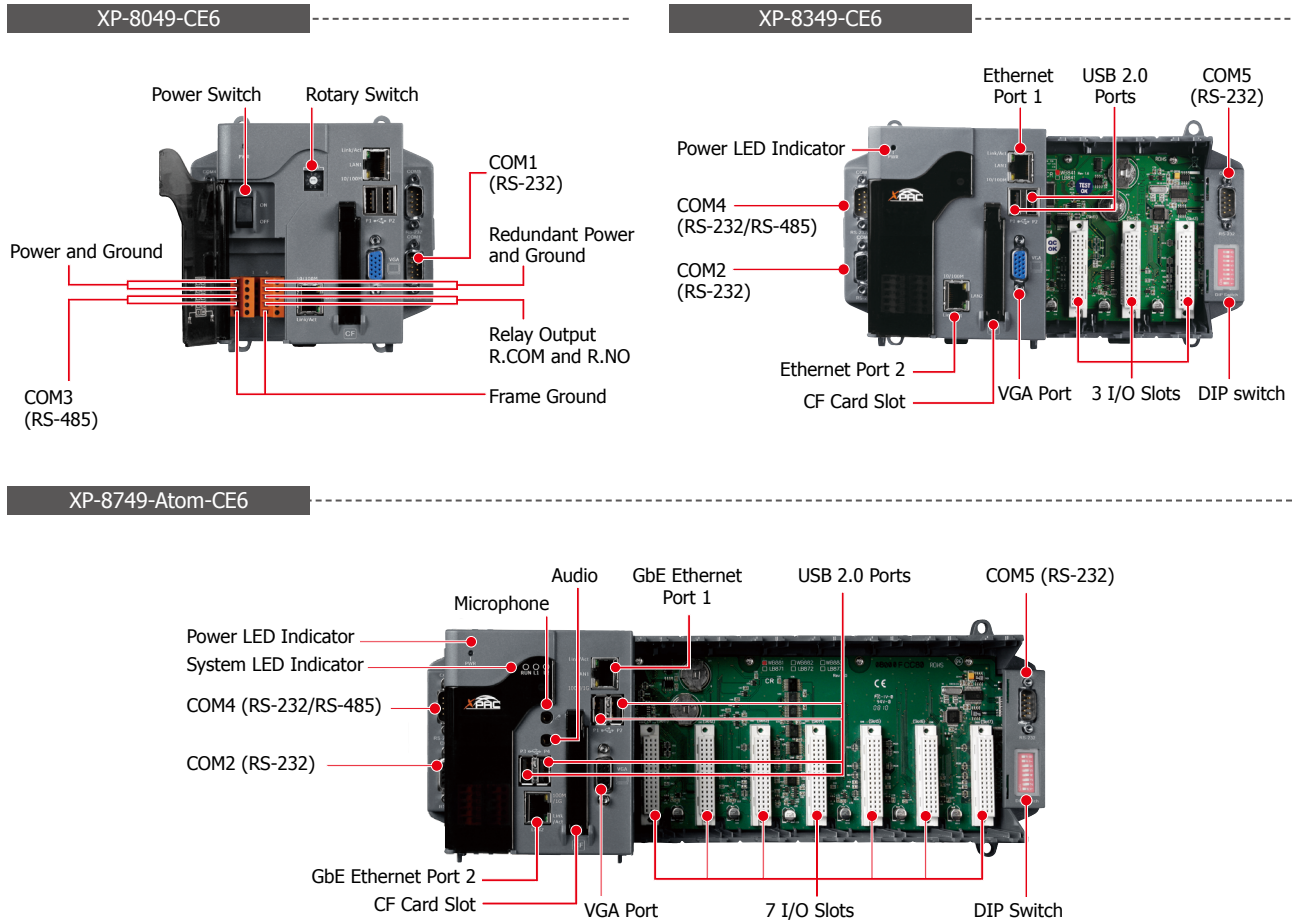


InduSoft Based XPAC

## Specifications

Models	XP-8049-CE6	XP-8349-CE6	XP-8749-CE6	XP-8149-Atom-CE6	XP-8349-Atom-CE6	XP-8749-Atom-CE6
<b>System Software</b>						
OS	Windows CE 6.0 R3 Core					
.Net Compact Framework	3.5					
Embedded Service	FTP Server, ASP (Java Script, VB Script), SQL Compact Edition 3.5					
SDK Provided	DII for Visual Studio .Net 2005/2008					
Multilanguage Support	English, German, French, Spanish, Russian, Italian, Czech, Japanese, Korean, Simplified Chinese, Traditional Chinese					
<b>Development Software</b>						
InduSoft Software	<b>InduSoft Web Studio Runtime</b>					
Others	Options: Microsoft EVC++4.0 or VS.NET 2003/2005/2008 (VB.NET 2003/2005/2008, C#.NET 2003/2005/2008)					
<b>CPU Module</b>						
CPU	AMD LX800, 500 MHz			Atom Z510, 1.1 GHz		
System Memory	512 MB DDR SDRAM					
Dual Battery Backup SRAM	512 KB; data valid for up to 5 years (for retaining variables)					
Flash	4 GB			8 GB		
EEPROM	16 KB					
CF Card	Yes, support up to 32 GB					
RTC (Real Time Clock)	Display seconds, minutes, hours, date, day of the week, month, year					
Programmable LED Indicator	-			2		
64-bit Hardware Serial Number	Yes, for Software Copy Protection					
Dual Watchdog Timers	Yes					
Rotary Switch	Yes (0 ~ 9)					
DIP Switch	-			Yes (8 bits)		
Audio	-			Microphone-In and Earphone-Out		
<b>VGA &amp; Communication Ports</b>						
VGA	Yes (resolution: 1024 x 768, 800 x 600, 640 x 480)			Yes (resolution: 1400 x 1050, 1024 x 768, 800 x 600, 640 x 480)		
Ethernet	RJ-45 x 2, 10/100 Base-TX (Auto-negotiating, Auto MDI/MDI-X, LED indicators).					
USB 2.0	2			4		
COM 1	RS-232 (RxD, TxD and GND); non-isolated	Internal communication with the high profile I-87K series modules in slots				
COM 2	RS-232 (RxD, TxD and GND); non-isolated					
COM 3	RS-485 (Data+, Data-) with internal self-tuner ASIC; 3000 VDC isolated					
COM 4	RS-232/RS-485 (RxD, TxD, CTS, RTS and GND for RS-232, Data+ and Data- for RS-485); non-isolated					
COM 5	RS-232 (RxD, TxD, CTS, RTS, DSR, DTR, CD, RI and GND); non-isolated					
<b>I/O Expansion Slots</b>						
Number of Slots	0	3	7	1	3	7
	Note: For High Profile I-8K and I-87K Modules Only					
<b>Mechanical</b>						
Dimensions (W x L x H)	137 x 132 x 125 (mm)	231 x 132 x 125 (mm)	355 x 132 x 125 (mm)	169 x 132 x 125 (mm)	231 x 132 x 125 (mm)	355 x 132 x 125 (mm)
Installation	DIN-Rail or Wall Mounting					
<b>Environmental</b>						
Operating Temperature	-25 ~ +75°C					
Storage Temperature	-30 ~ +80°C					
Ambient Relative Humidity	10 ~ 90% RH (non-condensing)					
<b>Power</b>						
Input Range	+10 ~ +30 VDC					
Isolation	1 kV					
Redundant Power Inputs	Yes, with one power relay (1 A @ 24 VDC) for alarm					
Capacity	15 W	35 W	35 W	25 W	35 W	35 W
Consumption	14.4 W	14.4 W	16.8 W	16.6 W	16.8 W	18 W

## Appearance



## Ordering Information

InduSoft Default Runtime License: 300 Tags, 3 Drivers	
XP-8049-CE6 CR	0 I/O slot InduSoft Based XPAC with WinCE 6.0 (OS: Multi-Language version) (RoHS)
XP-8349-CE6 CR	3 I/O slots InduSoft Based XPAC with WinCE 6.0 (OS: Multi-Language version) (RoHS)
XP-8749-CE6 CR	7 I/O slots InduSoft Based XPAC with WinCE 6.0 (OS: Multi-Language version) (RoHS)
XP-8149-Atom-CE6 CR	1 I/O slot InduSoft Based XPAC with WinCE 6.0 (OS: Multi-Language version) (RoHS)
XP-8349-Atom-CE6 CR	3 I/O slots InduSoft Based XPAC with WinCE 6.0 (OS: Multi-Language version) (RoHS)
XP-8746-Atom-CE6 CR	7 I/O slots InduSoft Based XPAC with WinCE 6.0 (OS: Multi-Language version) (RoHS)
InduSoft Default Runtime License: 1500 Tags, 3 Drivers	
XP-8049-CE6-1500 CR	0 I/O slot InduSoft Based XPAC with WinCE 6.0 (OS: Multi-Language version) (RoHS)
XP-8349-CE6-1500 CR	3 I/O slots InduSoft Based XPAC with WinCE 6.0 (OS: Multi-Language version) (RoHS)
XP-8749-CE6-1500 CR	7 I/O slots InduSoft Based XPAC with WinCE 6.0 (OS: Multi-Language version) (RoHS)
XP-8149-Atom-CE6-1500 CR	1 I/O slot InduSoft Based XPAC with WinCE 6.0 (OS: Multi-Language version) (RoHS)
XP-8349-Atom-CE6-1500 CR	3 I/O slots InduSoft Based XPAC with WinCE 6.0 (OS: Multi-Language version) (RoHS)
XP-8749-Atom-CE6-1500 CR	7 I/O slots InduSoft Based XPAC with WinCE 6.0 (OS: Multi-Language version) (RoHS)

## Accessories

Accessories	
DP-660	24 VDC/2.5 A, 60 W and 5 VDC/0.5 A, 2.5 W Power Supply with DIN-Rail Mounting
DP-1200	24 VDC/5.0 A, 120 W Power Supply with DIN-Rail Mounting
MDR-60-24	24 VDC/2.5 A, 60 W Power Supply with DIN-Rail Mounting
NS-205 / NS-208	5-port/8-port Unmanaged Industrial 10/100 Ethernet Switch with Plastic Case