

~~WP-8136 / WP-8436 / WP-8836~~



WP-8146 / WP-8446 / WP-8846

Standard WinPAC-8000 controller with InduSoft and ISaGRAF

~Phased-out~

~Phased-out~

~Phased-out~



Model: WP-8136



Model: WP-8436



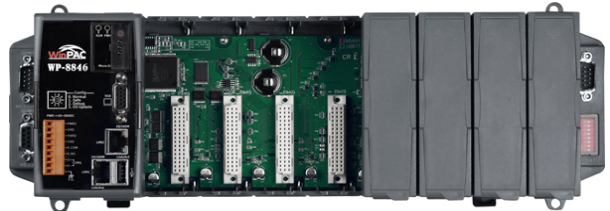
Model: WP-8836



Model: WP-8146



Model: WP-8446



Model: WP-8846

Introduction

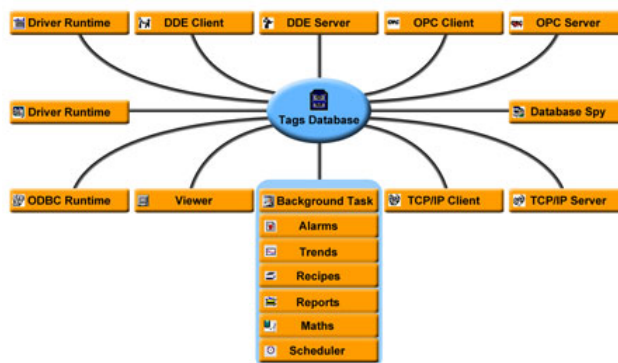
ICP DAS WinPAC-8xx6 Series (WP-8136/8436/8836/8146/8446/8846) are new generation WinCE based PACs (Programmable Automation Controller). It features with the powerful InduSoft Web Studio and ISaGRAF. InduSoft is the most powerful, integrated collection of e-automation development tool that includes all the building blocks needed to develop Human Machine Interface (HMI) and Super-visory Control and Data Acquisition (SCADA) systems. ISaGRAF is a PLC-like software and supports all five IEC61131-3 languages (LD, ST, FBD, SFC, FC). WinPAC-8x36 equips a PXA270 CPU (520MHz) running Windows CE.NET 5.0 Operating System, variant connectivity (10/100 Base-TX dual Ethernet, RS-232, RS-485, VGA, and USB ports) and 1/4/8 slots for high performance Parallel-type I/O modules (High Profile I-8K series) and Serial-type I/O modules (Hot-Swap High Profile I-87K I/O modules). Memories come with 128 MB SRAM, 512 KB dual battery backup SRAM, 128 MB FLASH & 16 GB microSD. For redundant supporting: dual Watchdog Timers, redundant power inputs, dual battery backup SRAM, dual Ethernet Ports. WinPAC-8x36 Series will upgrade your system!

Software Features

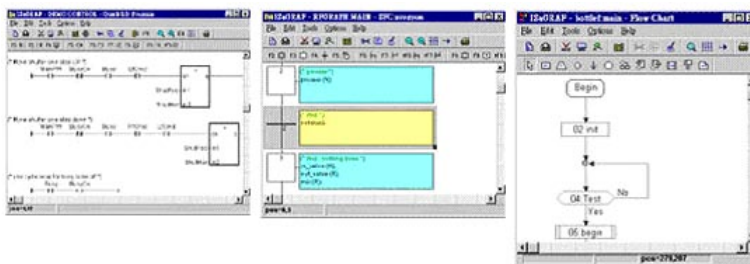
InduSoft Web Studio General Features

IWS applications run on microcomputers connected in real-time to machines or processors through WinPAC programmable controllers, remote I/O devices, and other data acquisition equipment. These applications consist of animated operator-interface screens, rollable I/O devices, an application tags database, and optional modules such as alarm monitors, trend charts, recipes, schedulers, and a security system.

- Intuitive script language with more than 100 standard functions is provided.
- Conform to industry standards such as Microsoft.NET, OPC, DDE, ODBC, XML.
- Full-Featured WinCE-based run-time environment (CE View).
- Dynamic library of symbols - customizable.
- ActiveX container (Windows NT/2000/XP/CE).
- Automatic e-mail (SMTP) and dial-up connection interface supported.
- Provide multi-level security for applications, including the Internet and Intranet.



- ISaGRAF General Features
 - Support five IEC61131-3 languages, LD,ST, FBD, SFC, IL plus FC.
 - Modbus RTU/TCP protocol to integrate to SCADA software and HMI
 - Controller to Controller Data Exchange via Ethernet: Ebus.
 - All I-7000 & I-87K series I/O modules can be integrated as remote I/O modules.
 - Auto-scan I/O : Automatically scan I/O boards & declare I/O variables.
 - Motion: Motion control is available when I-8091 boards integrated.
 - Web HMI: Monitoring and control the local or remote controller via the Internet Explorer running on your PC.



Specifications

Models	WP-8136	WP-8436	WP-8836	WP-8146	WP-8446	WP-8846
System Software						
OS	Windows CE 5.0					
.Net Compact Framework	3.5					
Embedded Service	FTP Server, Web Server					
Multilanguage Support	English, German, French, Spanish, Russian, Italian, Korean, Simplified Chinese, Traditional Chinese					
Development Software						
InduSoft Software	InduSoft Web Studio v7.1+SP3					
ISaGRAF Software	ISaGRAF Ver.3	IEC 61131-3 standard				
	Languages	LD, ST, FBD, SFC, IL & FC Support Soft-GRAB HMI : XP-8xx7-CE6, XP-8xx7-Atom-CE6, WP-8xx7/5xx7 and VP-2xW7/4xx7 PAC				
	Max. Code Size	1 MB				
	Scan Time	3 ~ 15 ms for normal program 15 ~ 50 ms for complex or large program				
Non-ISaGRAF	Options: MS eVC++ 4.0 or VS.NET 2005/2008 (VB.NET, C#.NET)					
Web Service						
Web HMI	PC running Internet Explorer can monitor/control PAC via Internet/modem					
Security	Support three levels username and password protection. (high/middle/low)					
CPU Module						
CPU	PXA270, 520 MHz					
SDRAM	128 MB					
Dual Battery Backup SRAM	512 KB; data valid up to 5 years (for retain variables)					
Flash	128 MB		96 MB			
EEPROM	16 KB					
Memory Expansion	microSD socket with one microSD card (support up to 32 GB)					
RTC (Real Time Clock)	Provide second, minute, hour, date, day of week, month, year					
64-bit Hardware Serial Number	Yes, for Software Copy Protection					
Dual Watchdog Timers	Yes					
Programmable LED Indicator	1					
Rotary Switch	Yes (0 ~ 9)					
DIP Switch	-	Yes (8 bits)	Yes (8 bits)	-	Yes (8 bits)	Yes (8 bits)
VGA & Communication Ports						
VGA	Yes, 640 x 480, 800 x 600, 1024 x 768			Yes, 640 x 480, 800 x 600		
Ethernet	RJ-45 x 2, 10/100 Base-TX (Auto-negotiating, LED indicators)					
USB 1.1 (Host)	2			1		
COM0	Internal communication with the high profile I-87K series modules in slots					
COM1	RS-232 (to update firmware) (RxD, TxD and GND); non-isolated					
COM2	RS-485 (Data+, Data-) with internal self-tuner ASIC; 2500 VDC isolated for WP-8137 and WP-8147; 3000 VDC isolated for other models.					
COM3	-	Yes	Yes	-	Yes	Yes
	RS-232/RS-485 (RxD, TxD, CTS, RTS and GND for RS-232; Data+ and Data- for RS-485); non-isolated					
COM4	-	Yes	Yes	-	Yes	Yes
	RS-232 (RxD, TxD, CTS, RTS, DSR, DTR, CD, RI and GND); non-isolated					

I/O Expansion Slots						
Slot Number	1	4	8	1	4	8
Note: For High Profile I-8K and I-87K Modules Only						
Mechanical						
Dimensions (W x L x H)	95 mm x 132 mm x 111 mm: WP-8137, WP-8147 231 mm x 132 mm x 111 mm: WP-8437, WP-8447 355 mm x 132 mm x 111 mm: WP-8837, WP-8847					
Installation	DIN-Rail or Wall Mounting					
Environmental						
Operating Temperature	-25 ~ +75 °C					
Storage Temperature	-30 ~ +80 °C					
Ambient Relative Humidity	10 ~ 90 % RH (non-condensing)					
Power						
Input Range	+10 ~ +30 VDC					
Isolation	1 kV					
Redundant Power Inputs	Yes, with one power relay (1 A @ 24 VDC) for alarm					
Capacity	8 W	25 W	25 W	8 W	30 W	30 W
Power Consumption	7.3 W	9.1 W	9.6 W	7.3 W	9.1 W	9.6 W

Ordering Information

InduSoft Default Runtime License: 300 Tags, 3 Drivers		
WP-8136-EN	WP-8146-EN	InduSoft and ISaGRAF based WinPAC-8000 with 1 I/O slot (English version of OS)
WP-8436-EN	WP-8446-EN	InduSoft and ISaGRAF based WinPAC-8000 with 4 I/O slots (English version of OS)
WP-8836-EN	WP-8846-EN	InduSoft and ISaGRAF based WinPAC-8000 with 8 I/O slots (English version of OS)
WP-8136-TC	WP-8146-TC	InduSoft and ISaGRAF based WinPAC-8000 with 1 I/O slot (Traditional Chinese version of OS)
WP-8436-TC	WP-8446-TC	InduSoft and ISaGRAF based WinPAC-8000 with 4 I/O slots (Traditional Chinese version of OS)
WP-8836-TC	WP-8846-TC	InduSoft and ISaGRAF based WinPAC-8000 with 8 I/O slots (Traditional Chinese version of OS)
WP-8136-SC	WP-8146-SC	InduSoft and ISaGRAF based WinPAC-8000 with 1 I/O slot (Simplified Chinese version of OS)
WP-8436-SC	WP-8446-SC	InduSoft and ISaGRAF based WinPAC-8000 with 4 I/O slots (Simplified Chinese version of OS)
WP-8836-SC	WP-8846-SC	InduSoft and ISaGRAF based WinPAC-8000 with 8 I/O slots (Simplified Chinese version of OS)
InduSoft Default Runtime License: 1500 Tags, 3 Drivers		
WP-8136-EN-1500	WP-8146-EN-1500	InduSoft and ISaGRAF based WinPAC-8000 with 1 I/O slot (English version of OS)
WP-8436-EN-1500	WP-8446-EN-1500	InduSoft and ISaGRAF based WinPAC-8000 with 4 I/O slots (English version of OS)
WP-8836-EN-1500	WP-8846-EN-1500	InduSoft and ISaGRAF based WinPAC-8000 with 8 I/O slots (English version of OS)
WP-8136-TC-1500	WP-8146-TC-1500	InduSoft and ISaGRAF based WinPAC-8000 with 1 I/O slot (Traditional Chinese version of OS)
WP-8436-TC-1500	WP-8446-TC-1500	InduSoft and ISaGRAF based WinPAC-8000 with 4 I/O slots (Traditional Chinese version of OS)
WP-8836-TC-1500	WP-8846-TC-1500	InduSoft and ISaGRAF based WinPAC-8000 with 8 I/O slots (Traditional Chinese version of OS)
WP-8136-SC-1500	WP-8146-SC-1500	InduSoft and ISaGRAF based WinPAC-8000 with 1 I/O slot (Simplified Chinese version of OS)
WP-8436-SC-1500	WP-8446-SC-1500	InduSoft and ISaGRAF based WinPAC-8000 with 4 I/O slots (Simplified Chinese version of OS)
WP-8836-SC-1500	WP-8846-SC-1500	InduSoft and ISaGRAF based WinPAC-8000 with 8 I/O slots (Simplified Chinese version of OS)
** The default runtime license (CEView Lite Plus - 300 tags and 3 driver) is installed. **		

Accessories

NS-205 CR	Unmanaged 5-port Industrial Ethernet Switch (RoHS)
NS-208 CR	Unmanaged 8-port Industrial 10/100 Base-T Ethernet Switch (RoHS)
RU-87Pn	Remote Intelligent I/O Expansion Unit (It used to expand I-87K series I/O modules over the RS-485)
ADP-1080T-R	8" Color Industrial Display Monitor with Sealed Touch Screen, RS-232 Interface.
Touch 500	Touch LCD Monitor (RS-232/RS-485)
DP-660	24 V/2.5 A , 5 V/0.5 A Dual Output Power Supply
DP-665	24 V/2.5 A , 5 V/0.5 A Dual Output Power Supply
DP-1200 CR	24 V/5 A Power Supply (RoHS)
Note1: The I-7000 & I-87K series provides cost-effective protection and signals conversion for a wide range of valuable industrial control signals and control systems. Our product line includes RS-232 to RS-485 Converter, Digital I/O, Timer/Counter, Data Display, and application programs. I-7000 modules are good for a small amount of I/O channels, while I-87K I/O expansion units are good for medium amount of channels.	