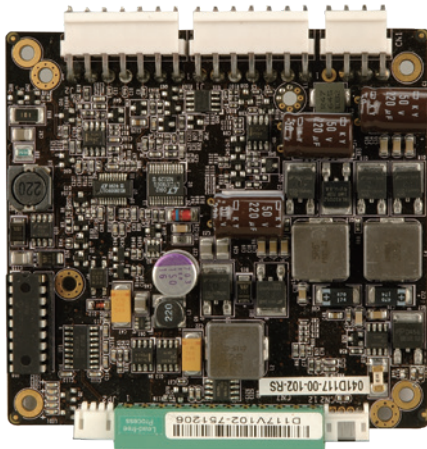
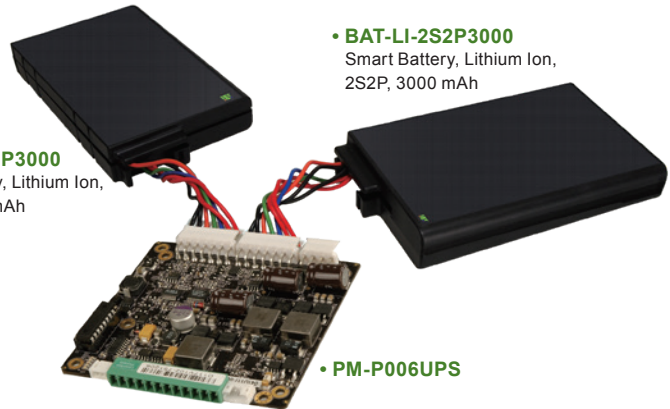


# PM-P006UPS

65 W DC/DC Converter Module, with UPS



• **BAT-LI-2S2P3000**  
Smart Battery, Lithium Ion,  
2S2P, 3000 mAh



• **BAT-LI-2S2P3000**  
Smart Battery, Lithium Ion,  
2S2P, 3000 mAh

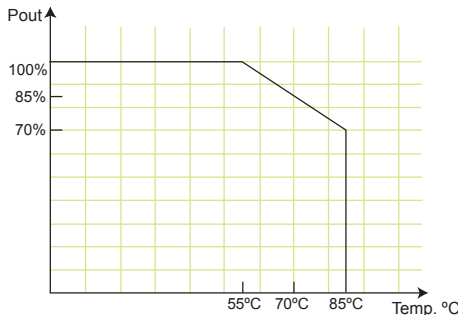
• **PM-P006UPS**

## Features

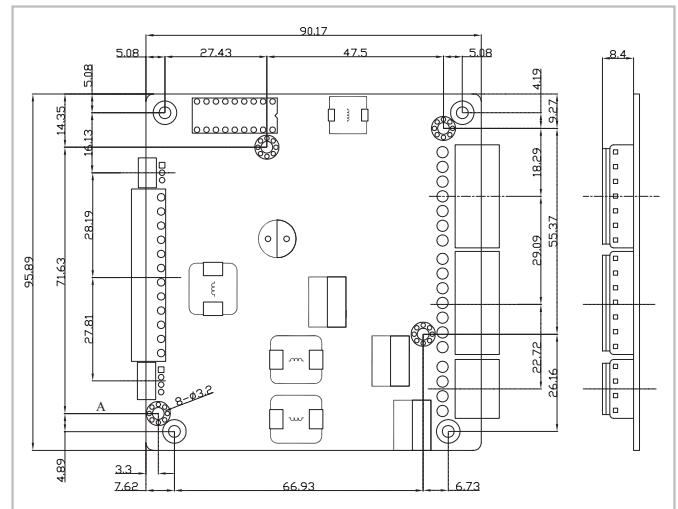
1. Load down protection
2. Over voltage protection
3. Short circuit protection
4. Over current protection
5. Smart battery charger for lithium ion
6. I/O interface: SMBus/I<sup>2</sup>C & RS-232
7. Support up to two battery packs
8. AT/ATX modes
9. Utility program: pull data out through RS-232 to a system

## Specifications

- Output (max.): 12 V@4 A, 5 V@10 A, 3.3 V@8 A, 5VSB@1 A, & -12 V @0.1 A
- Max. total output: 65 W
- Input: 6 VDC to 36 VDC
- Battery charge voltage: 12 V ~ 36 V
- Efficiency: up to 90%
- Dimensions (mm): 90 x 96
- Weight (NW): 178 g
- Operating temperature: -20°C ~ 85°C (without smart battery)  
Operating temperature: -10°C ~ 60°C (with smart battery)
- Storage temperature: -35°C ~ 95°C



## Dimensions (Unit: mm)



## Packing Information

- 1 x PM-P006UPS
- 1 x QIG
- 1 x DB-9 pin connector cable (32100-157200-RS)

## Applications



Battery backup system



Portable equipment



Power sensitive equipment

## Ordering Information

Part No.	Description
PM-P006UPS-R10	65 W ATX DC/DC 6-36 VDC input, 12 V, 5 V, 3.3 V, -12 V and 5VSB PC/104 power module with UPS
BAT-LI-2S2P3000-R10	Smart Battery, lithium ion, 2S2P, 3000 mAh
CB-NOLP4-RS	20 cm cable for terminal block DC input

### High Energy Density, Light Weight and Compact DC/DC UPS & Power Module

- Protects your precious equipment from damage
- Reduces the risk of losing your valuable data

An uninterruptible power supply provides emergency backup power when the main power is lost.

**Benefits:**

- Provides power for a certain amount of time after a power failure has occurred
- Provides stable power to equipment during line sags and spikes
- Absorbs power surges and transients
- Smooths out noisy power sources

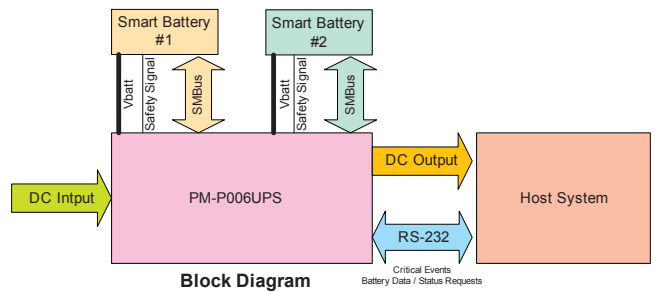
The utility software displays the following information:

- Current power source
- Battery status
- Charging status
- Remaining battery percentage

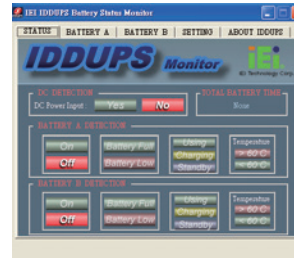


Battery Capacity Status

### Level 2 Smart Battery Charger & Power Modules



Block Diagram



Battery Monitoring Utility



Battery Monitoring Connection Cable (PN: 32100-157200-RS)

### Battery Pack (P/N: BAT-LI-2S2P3000)



Battery Type	Lithium Ion			
Pout (W)	100	80	60	40
Time (min.)	8	14	18	27
Dimensions (mm)	148 x 89 x 20			
Capacity	3000 mAh			

### Pin Assignments

**Input Power Connector**

CN1	Pin 1	Pin 2	Pin 3	Pin 4
	VIN	VIN	Gnd	Gnd

**I/O Interface RS-232 Connector**

JP2	Pin 1	Pin 2	Pin 3
	Gnd	TX	RX

**Output Power Connector**

CN7	Pin 1	Pin 2	Pin 3	Pin 4	Pin 5	Pin 6	Pin 7	Pin 8	Pin 9	Pin 10	Pin 11	Pin 12
	N12V	Gnd	12 V	Gnd	3 V	3 V	Gnd	5 V	5 V	Gnd	5 VSB	Gnd

**ATX Mode Connector**

CN2	Pin 1	Pin 2	Pin 3	Pin 4
	PWROK	5 VSB	Gnd	PS_ON

**Battery Connector**

J1, J2	Pin 1	Pin 2	Pin 3	Pin 4	Pin 5	Pin 6	Pin 7
	BAT+	BAT+	Clock	Data	Temp	Gnd	Gnd

### Wire Harness Selection Guide

**DC Input**



Option 1.  
PN: CB-NOLP4-RS  
Cable for terminal block

ICP Electronics Australia Pty Ltd

TEL: 02 9457 6011  
sales@icp-australia.com.au  
www.icp-australia.com.au

