

## I-8430/ I-8830 I-8430-G/ I-8830-G

Embedded Ethernet I/O Unit



Model: I-8430



Model: I-8830



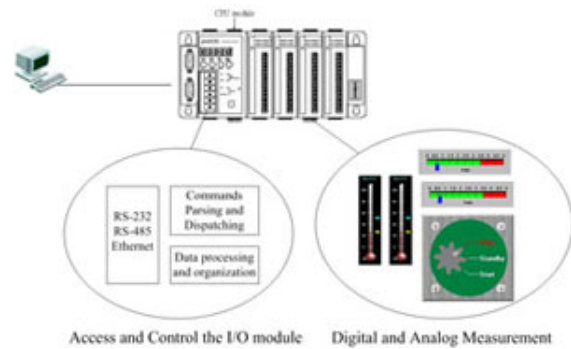
Model: I-8430-G



Model: I-8830-G

### Introduction

The I-8430 and I-8830 are embedded Ethernet I/O units using DCON Protocol Firmware. ICPDAS provides various I/O modules, such as analog input/output, digital input/output and counter/frequency modules, which can be used in remote data acquisition and control applications for environment monitoring, power management and factory automation, etc via **Ethernet Port** or **RS-232 Port**.



The CPU is a 8-bit 80188 (40MHz). Apart from the original functions (input, output, power on value, safe value, high limit value, low limit value) of the I/O module, the firmware provides additional functions to allow I/O modules in different slots to be combined together. For example, if the channel value of an AI module is above a predefined high limit value, or below a predefined low limit value, the information can be immediately passed to another DO module to trigger alarm or light.

Various software development kits (SDK) and demos are provided, such as DLL, ActiveX, Labview driver, Indusoft driver, Linux driver, OPC server, etc.

Although all the SDK drivers support only COM Port interface, users can also use there SDK by installing the VxComm Utility . VxComm Utility can create Virtual COM Port to map the Ethernet Port, then the I/O modules can be easily added to the I-8430/I-8830 and can be quickly integrated into an existing system.

### Features

Supports IPv4.

Supports the Ethernet or RS-232 communication interface.

Supports DCON communication protocol

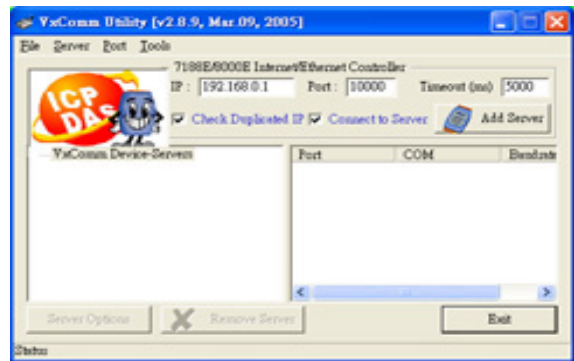
Dual Bus designed to supports I-8K and I-87K series I/O modules, such as DI/DO, AI/AO, Counter/Frequency modules

Compact I/O Expansion slot allows the quick installation of various 8K and 87K I/O modules

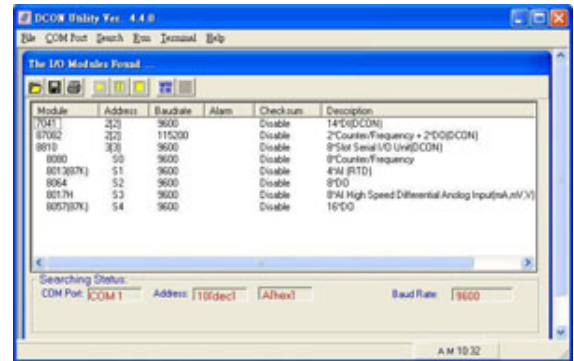


By using the VxComm Utility, PC can use Virtual COM Port to communicate with the remote Ethernet I/O.

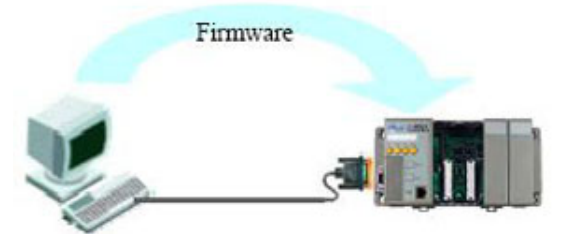
Note: Remote Ethernet I/O must support XServer to have Virtual COM Port function.



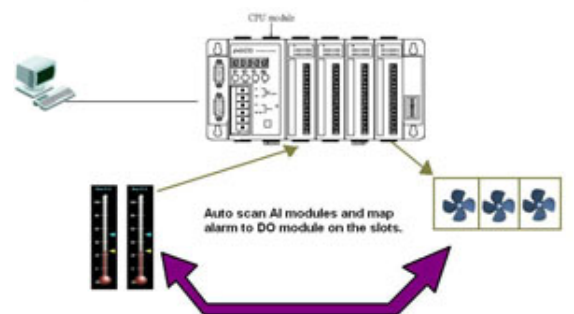
I/O configurable using DCON Utility via Ethernet port or RS-232 Port.



Firmware updated via the RS-232 port



Firmware auto scan AI modules and can map alarm to DO modules on the slots.

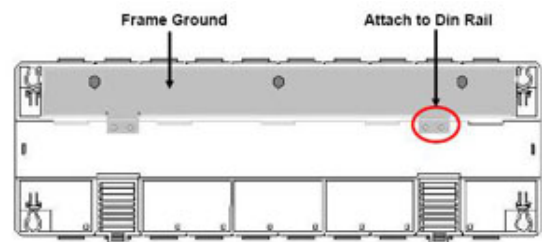


Dual Watch Dog mechanism enable I-8000 system can work reliably under harsh environment.

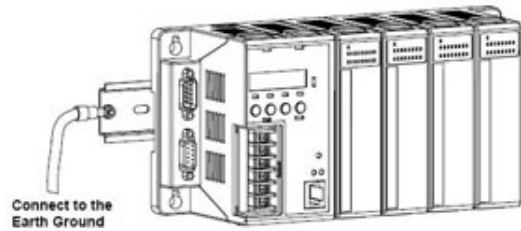
Ventilated housing designed to operate between  $-25^{\circ}\text{C}$  to  $+75^{\circ}\text{C}$



Using DIN rail clips or Screw poles around the corners allows the control unit to be easily mounted on the control box



Frame Ground provides a path for bypassing ESD, allowing enhanced static protection (ESD) capability and ensures that the module is more reliable.



Various SDKs provided ( free )  
 DLL, ActiveX, Labview driver, Indusoft driver, Linux driver, OPC server, etc



## Specifications

### CPU module

CPU	80188 or compatible (8-bit and 40MHz)
SRAM	512KBytes
Flash	512KBytes
EEPROM	2KBytes
NVRAM	Yes
RTC (real time clock)	Yes
Hardware Serial Number	Yes
Built-in Watchdog Timer	Yes

### Communicate Interface

COM 0	Internal communication with the 87K modules
COM 1	RS-232 (to update firmware)
COM 2	-
COM 3	RS-232/RS-485
COM 4	-
Ethernet Port	10BaseT NE2000 compatible

### SMMI

5 - Digit LED Display	Yes
3 - Programmable LED Indicators	Yes
4 - Push Buttons	Yes

### I/O expansion slots

8430	4 Slots
8830	8 Slots

### Dimensions

8430	230mm x 110mm x 75.5mm
8830	354mm x 110mm x 75.5mm

### Operating Environment

Operating Temperature	-25°C to +75°C
Storage Temperature	-30°C to +85°C
Humidity	5 ~ 95%,non-condensing

### Power

Protection	Power reverse polarity protection
3KV power isolation	Yes
Power requirement	10 ~ 30 V/DC
Power supply	20W
Power consumption	I-8430 : 3.9 W I-8830 : 5.1 W

## Ordering information

I-8430	I-8430 Embedded I/O unit
I-8830	I-8830 Embedded I/O unit
I-8430-G	I-8430 Embedded I/O unit with gray color
I-8830-G	I-8830 Embedded I/O unit with gray color

ICP Electronics  
 Australia Pty Ltd

TEL: 02 9457 6011  
 sales@icp-australia.com.au  
 www.icp-australia.com.au



## Accessories

<a href="#">KA-52F</a>	AC100~250V input, DC 24V/1A output, flat type power supply
<a href="#">DIN-KA52F</a>	KA-52F with DIN-Rail mount
<a href="#">DP-665</a>	AC 85 ~ 270 V input, DC 24V/1.7A and 5V/0.5A output power supply
<a href="#">DP-660</a>	24V/1.7A 5V/0.5A Power Supply
<a href="#">DP-1200</a>	24V/5A Power Supply

ICP Electronics  
Australia Pty Ltd

TEL: 02 9457 6011  
[sales@icp-australia.com.au](mailto:sales@icp-australia.com.au)  
[www.icp-australia.com.au](http://www.icp-australia.com.au)

