

3.3. ET-7000/PET-7000/PET-7000-48V Series (Web based)

• Introduction



The ET-7000/PET-7000, a web-based Ethernet I/O module, features a Built-in web server which allows configuration, I/O monitoring and I/O control by simply using a regular web browser. Remote control is as easy as surfing the Internet.

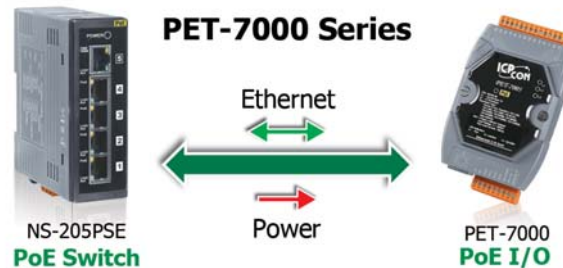
Besides Web HMI function, no more programming or HTML skills are required; creating dynamic and attractive web pages for I/O monitoring and I/O control would be fun to engineers ever after. The ET-7000/PET-7000 offers easy and safe access for users from anytime and anywhere! In addition, the ET-7000/PET-7000 also supports Modbus TCP protocol that makes perfect integration to SCADA software.

Furthermore, PET-7000 features "PoE" that not only Ethernet but also power is carried through an Ethernet cable. This feature makes installation of PET-7000 a piece of cake. Imagine that no more unnecessary wires, only an Ethernet cable takes care of everything in the field.

• Features

1. Power over Ethernet (PoE)

The PET-7000 series module can be powered by an IEEE802.3af compliant PoE switch. Both Ethernet and power can be carried by an Ethernet cable eliminating the need for additional wiring and power supply.



2. Communication Security

Account and password are needed when logging into the ET-7000 web server. An IP address filter is also included, which can be used to allow or deny connections with specific IP addresses.

3. Support for both Modbus TCP and Modbus

UDP Protocols

The Modbus TCP, Modbus UDP slave function on the Ethernet port can be used to provide data to remote SCADA software.

4. Built-in I/O

Various I/O components are mixed with multiple channels in a single module, which provides the most cost effective I/O usage and enhances performance of the I/O operations.

5. Dual Watchdog

The Dual Watchdog consists of a Module Watchdog and a Communication Watchdog. The action of AO,DO are also associated to the Dual Watchdog.

Module Watchdog is a built-in hardware circuit to monitor the operation of the module and will reset the CPU if a failure occurs in the hardware or the software. Then the Power-on Value of AO,DO will be loaded.

Communication Watchdog is a software function to monitor the communication between the host and the ET-7000/PET-7000 module. The timeout of the communication Watchdog is programmable, when the ET-7000/PET-7000 doesn't receive commands from the host for a while, the watchdog forces the AO,DO to pre-programmed Safe Value to prevent unpredictable damage of the connected devices.

6. Highly Reliable Under Harsh Environment

- Wide Operating Temperature Range: -25 ~ +75°C
- Storage Temperature: -30 ~ +80°C
- Humidity 10 ~ 90% RH (Non-condensing)

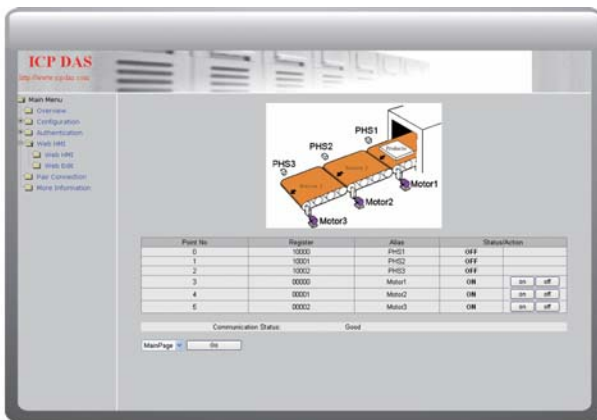


8. I/O Pair Connection

This function is used to create an AI/DI to AO/DO pair through Ethernet. Once the configuration is completed, the ET-7000/PET-7000 module can poll the status of remote AI/DI devices and then use the Modbus TCP protocol to continuously write to a local AO/DO channels in the background.

9. Web HMI

The Web HMI function allows the users to create dynamic and attractive web pages to monitor and control the I/O points. Users can upload specific I/O layout pictures (bmp, jpg, gif format) and define a description for each I/O point. No HTML or Java skills are needed to create the web pages.

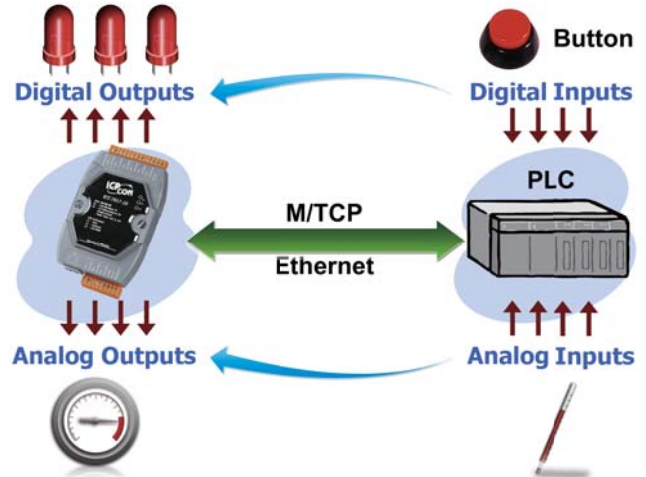


7. Power-on Value and Safe Value

Besides setting by the set AO,DO commands, the AO,DO can be set under two other conditions.

Power-on Value: The Power-on Value is loaded into the AO,DO under 3 conditions: Power-on, reset by Module Watchdog, reset by reset command.

Safe Value: When the Communication Watchdog is enabled and a Communication Watchdog timeout occurs, the "safe value" is loaded into the AO,DO.

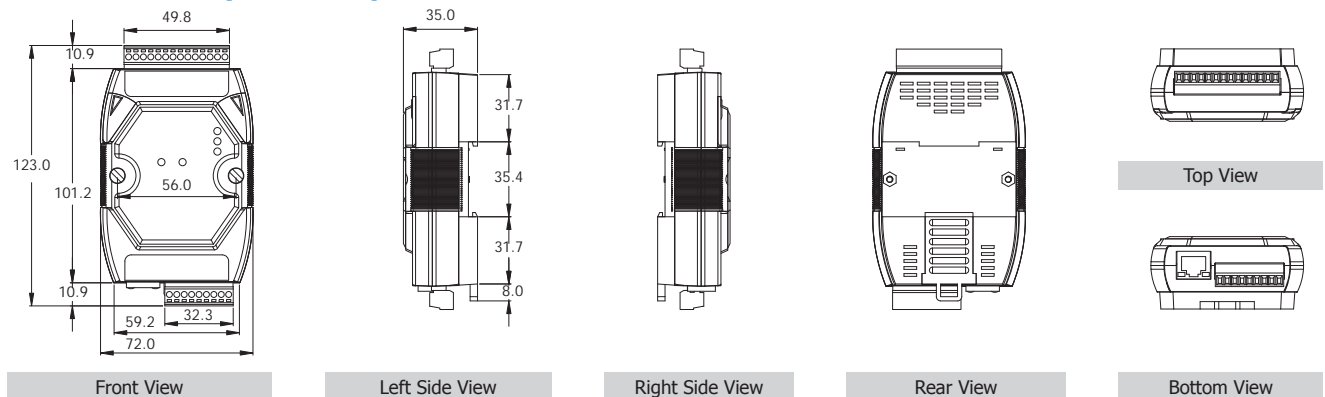


10. Built-in Web Server

Each ET-7000/PET-7000 module has a Built-in web server that allows the users to easily configure, monitor and control the module from a remote location using a regular web browser.



11. Dimensions (Units: mm)



• Software Support

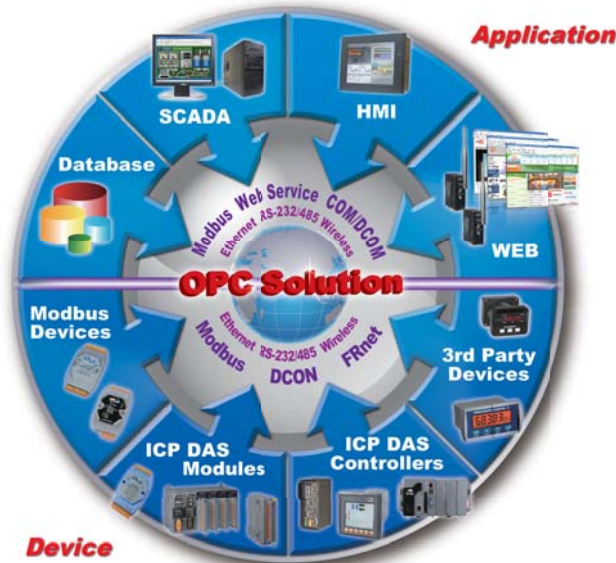
Our free charge software utility and development kit include

1. OPC Server

NAPOPC_ST DA Server is a **free** OPC DA Server ("OPC" stands for "OLE for Process Control" and "DA" stands for "Data Access") for ICP DAS products. Based on Microsoft's OLE COM (component object model) and DCOM (distributed component object model) technologies, NAPOPC_ST DA Server defines a standard set of objects, interfaces and methods for use in process control and manufacturing automation applications to facilitate the interoperability.

Using NAPOPC_ST DA Server, system integrates data with SCADA/HMI/Database software on the same computer and others. SCADA/HMI/Database sends a request and NAPOPC DA Server fulfills the request by gathering the data of ICP DAS modules (**License Free**) and third-party devices (**License Charge**) to SCADA/HMI/Database.

For different OS of PAC products, ICP DAS provides several professional DA Servers:



Version	NAPOPC_ST	NAPOPC_XPE	NAPOPC_CE5	NAPOPC_CE6
Platform	Desktop Windows	Windows XP Embedded	Windows CE5	Windows CE6
Price	Free/\$	Free	Free	Free

For more Information please visit <http://opc.icpdas.com>

2. EZ Data Logger

EZ Data Logger is the software that ICP DAS provides for users to easily build a small SCADA system on Windows 2000/XP/Vista. It comes with two versions, "Lite" & "Professional". The Lite version is not only full-functioned but free to all ICP DAS users!

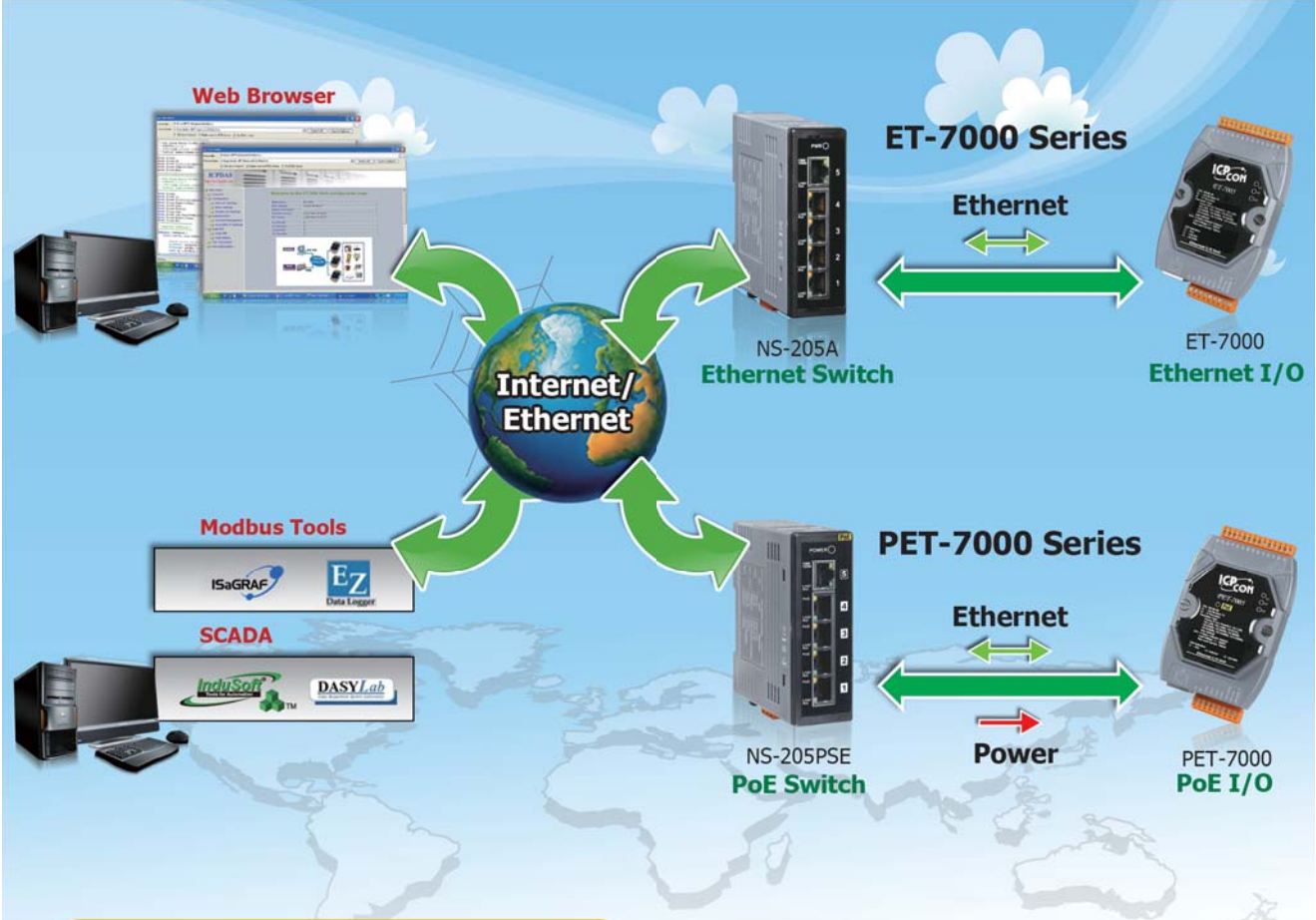
EZ Data Logger is a small data logger software. It can be applied to small remote I/O system. With its user-friendly interface, users can quickly and easily build a data logger software without any programming skill.

3. Modbus Software Development Toolkits

Plenty of library functions and demo programs are provided to let user develop programs easily under Windows, Linux and MiniOS7 operating systems.

OS	Development Language	SDK
MiniOS7	TC, BC	MBT7_xxx.lib, MBT8_xxx.lib and Demos
WinCE 5.0/6.0	VS .NET 2005/2008	nModbusCE.dll and Demos
WES 2009, Windows XP/Vista/7	VS .NET 2005/2008	nModbus.dll and Demos
	LabView	Demos
Linux	C	Libraries and Demos

• Difference between ET-7000, PET-7000 and PET-7000-48V



**PET-7000-48V series
 NO need of extra power supply**

