



ECAN-240 (Modbus TCP to 2-port CAN Bus Gateway)



ECAN-240



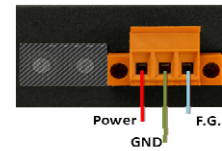
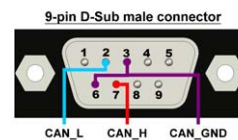
Dimensions

The ECAN-240 module is a Modbus TCP to 2-port CAN Bus Gateway. As its functionality, that provides communications via the Ethernet based on the Modbus TCP industrial protocol, meaning that the module can be easily integrated with an industrial network. The ECAN-240 module includes two CAN bus interfaces, meaning that more various CAN applications can be supported, such as a CAN bridge or a CAN message router. The CAN message router function means that the ECAN-240 module can be used to connect to four different CAN networks, ensuring they can communicate with each other.

Features

- Hardware
 - ◆ Supports input voltage 10~30VDC
 - ◆ Fully compatible with the ISO 11898-2 standard.
 - ◆ Includes built-in DIP-switch the can be used to enable/disable the terminator resistor
 - ◆ Includes an RJ-45 Ethernet interface with auto-negotiation function
 - ◆ Includes two CAN bus interfaces with 9 pin D-sub connector
 - ◆ Includes two rotary switches for selection of CAN bus Baud Rate
 - ◆ Contains seven LED indicators, one as a power indicator and the others for monitoring CAN bus activity
 - ◆ Contains LED indicator on RJ-45 for Ethernet status.
 - ◆ RoHS Design
- Software
 - ◆ Provides support for the CAN bus ID filter function
 - ◆ Provides support for the CAN bus bridge mode via configuration
 - ◆ Provides support for the CAN bus listen only mode via configuration
 - ◆ Provides support for a range of CAN bus Baud Rate from 10k bps to 1M bps adjustable via the rotary switch
 - ◆ Provides support for the Modbus TCP Client/Server function via configuration
 - ◆ Provides support for TCP/UDP pair connection function via configuration
 - ◆ Provides support for bootloader mode to enable firmware updates
 - ◆ Support web configuration functions

Wiring and Pin Assignments

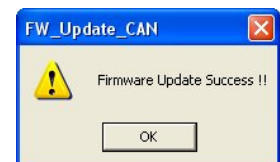
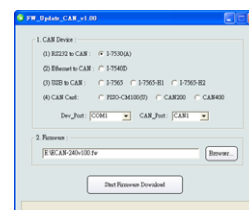


Web Configuration



- Ethernet, CAN, and basic Settings
- Modbus TCP Server Settings
- Modbus TCP Client Settings
- Pair Connection Settings

Firmware update function



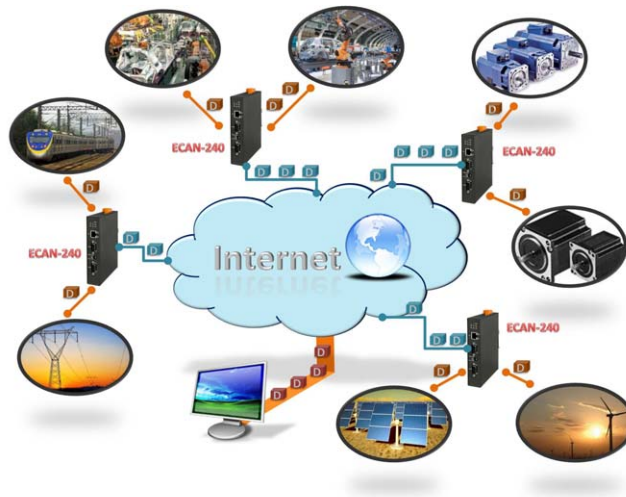
- Firmware update via CAN bus



Hardware Specifications

CAN Interface	
Channel	2 channels with 9 pins D-sub male connector
Baud Rate (bps)	10kbps to 1Mbps
Terminator Resistor	Built-in 120 ohm terminator resistor, enabled/disabled via DIP-Switch
Isolation	3 kV VDC for DC to DC, 2500 Vrms for photo couple
CAN Bus Specification	ISO 11898-2 CAN 2.0A and CAN 2.0B
Ethernet	
Controller	10/100Base-TX Ethernet Controller (Auto-negotiating, Auto_MDIX)
Connector	RJ-45 with Ethernet indicator
Protocol	Modbus TCP Client/Server, TCP, UDP, HTTP
Socket connections	8 for TCP, 1 for UDP
LED Indicator	
LED	Power (1), CAN Bus Status (2), CAN Bus Tx (2), CAN Bus Rx (2) and Ethernet Status (RJ-45) (2)
Power	
Power	Unregulated +10 ~ +30 VDC, (0.08)@24VDC, 2W
Protection	Reverse polarity protection, Over-voltage brown-out protection
Mechanical	
Installation	DIN-Rail
Dimension (W x L x H)	106.8mm x 146.8mm x 25.9mm
Environment	
Operating Temperature	-25°C to +75°C
Storage Temperature	-40°C to +80°C
Relative Humidity	10 to 90% RH, Non-condensing

Applications



Ordering Information

ECAN-240	Modbus TCP to 2-port CAN Bus Gateway
-----------------	--------------------------------------