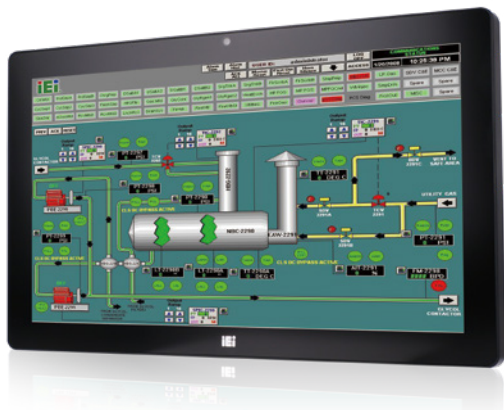


AFL3-W22C-ULT3

Intel® Core™ i5 and Celeron® ULT Processor



Features

- W21.5 light industrial interactive panel PC
- 9 V ~ 30 V wide range DC power input
- Selectable AT/ATX power mode
- Built-in speakers
- One mSATA slot
- IP64 compliant front panel
- IEI One Key Recovery solution allows you to create rapid OS backup and recovery (suggested with over 4GB storage capacity)

Specifications



| Model | | AFL3-W22C-ULT3 |
|-----------------------|---|---|
| LCD | Size | 21.5" |
| | Resolution | 1920 x 1080 |
| | Brightness (cd/m ²) | 250 |
| | Contrast Ratio | 1000:1 |
| | LCD Color | 16.7M |
| | Pixel Pitch (mm) | 248.25 (H) × 248.25 (V) |
| | Viewing Angle (H-V) | 170°/160° |
| Touch | Backlight MTBF(hrs) | 30,000 (LED backlight panel) |
| | Touch Screen | Projected capacitive with USB interface (nti-UV / anti-glare coating) |
| Motherboard | Touch Controller | EETI EXC3180 |
| | CPU | Intel® Core™ i5 and Celeron® ULT Processor |
| | RAM | Two 260-pin 2133/1867 MHz dual-channel DDR4 SO-DIMMs (system max. 32 GB) |
| | Ethernet | 2 x Intel® I211-AT PCIe GbE controller |
| Storage | Audio Codec | ALC892 |
| | | 1 x mSATA (E-Window) 1 x 2.5" SATA 3Gb/s HDD bay 1 x M.2 M key PCIe (2280 or 22110) |
| I/O Ports & Switch | | 1 x RS-232 by DB-9 (RI/5V/12V) 1 x RS-232/422/485 by DB-9 (RI/5V/12V) 2 x GbE LAN 4 x USB 3.1 Gen 1 (5Gb/s) 1 x HDMI output 1 x Power switch 1 x Reset button 1 x AT/ATX switch 1 x 9-30V lockable power jack |
| E-Window Expansion | | Yes, optional (full-size mini-PCIe slot with PCIe/SATA/USB) |
| Audio | | AMP 3W + 3W (internal speaker) |
| Camera and Microphone | | 2-megapixel with low light function, digital microphone |
| Wireless & Bluetooth | | IEEE 802.11 a/b/g/n/ac, Bluetooth V4.1 M.2 slot A+E key 2230 slot (PCIe/USB signal) |
| OSD Function | | Software OSD |
| Physical | Front Panel Construction | PC + ABS Plastic |
| | Mounting | Panel, Wall, Stand and Arm VESA 75mm x 75mm / 100mm x 100mm |
| | Color | Black C |
| | Dimensions (W x H x D) (mm) | 528 x 336 x 68 |
| | Cut-out Dimensions (W x H) (mm) | 502 x 303 |
| | Net/Gross Weight (kgs) | 8.27/11.27 |
| Environment | Operating Temperature (Ambient with air flow) | -20°C ~ 50°C |
| | Storage Temperature | -20°C ~ 60°C |
| | Humidity | 10% to 95% (non-condensing) |
| | IP Level | IP 64 compliant front panel |
| | Safety & EMC | CE / FCC |
| | Thermal Solution | Fanless |
| Power | Power Requirement | 9 V ~ 30 VDC |
| | Power Consumption | 12V@6A (Intel® Core™ i5-6300U CPU with 4GB DDR42133 MHz DDR4 memory) |

Ordering Information

| Part No. | Description |
|-----------------------------|---|
| AFL3-W22C-ULT3-C/PC/4G-R13 | Wide 22" 250 cd/m ² 1920x1080 Panel PC with Intel® 14nm 6th Generation Mobile Celeron®3955U (15W) on-board Processor (ULT), 1*4GB DDR4 RAM, 802.11a/b/g/n/ac WiFi module, PCAP touch, 2M camera, microphone, with AG, R13 |
| AFL3-W22C-ULT3-I5/PC/4G-R13 | Wide 22" 250 cd/m ² 1920x1080 Panel PC with Intel® 14nm 6th Generation Mobile Core™ i5-6300U (15W) on-board Processor (ULT), 1*4GB DDR4 RAM, 802.11a/b/g/n/ac WiFi module, PCAP touch, 2M camera, microphone, with AG, R13 |

Packing List

| Item | Part No. | Q'ty | Remark |
|--------------------------|---------------------|------|------------------------------------|
| Round head machine screw | 44403-040061-RS | 4 | M2*4 round head machine screw |
| Pan head machine screw | 44003-030052-RS | 4 | M4*6 pan head machine screw |
| Power cord | 32702-000200-100-RS | 1 | |
| Power adapter | 63040-010096-100-RS | 1 | 96W; Vin: 90V~264V AC; Vout: 12VDC |

Options

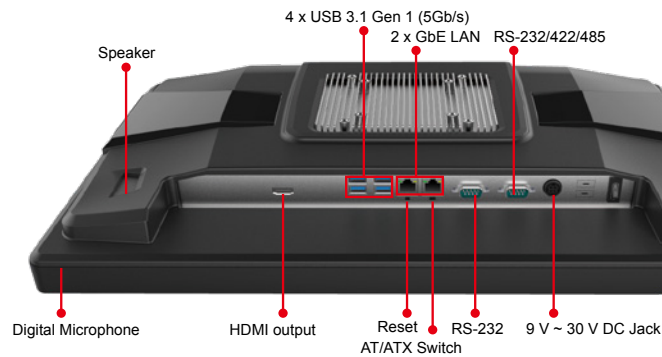
| | |
|--|---|
| Item | AFL3-W22C-ULT3 |
| Panel Mounting Kit | AFL3PK-W19C-R10 |
| Wall Mounting Kit | AFLWK-19B |
| Arm | ARM-11-RS/ARM-31-RS |
| Stand | STAND-A21-R10/ STAND-210-R11/STAND-A19-RS/STAND-C19-R10 |
| Magnetic Card Reader | AFL3P-W10MSR-U-R10 |
| Barcode Scanner | AFL3-2D-R11 |
| RFID Reader (13.56 MHz Mifare Type) (For ATO assembly) | AFL3-MF-RFID-KIT02-R10 |
| *OS: Win 7 Embedded (64-bit) | AFL3-W15C-ULT3-WES7P64-R10 |
| *OS: Win 10 IOT Enterprise (64-bit) | AFL3-W15C-ULT3-W10E64-V-R10 |

*OS image with CD-ROM without storage

E-Window (for ATO assembly) **E-Window**

| Part No. | Description |
|------------------------|---|
| E-MPCIE-LAN02-R10 | PCIe Mini card supports 1-port GbE with Realtek RTL8111E controller, with PMS 194C I/O bracket and 340 mm cable, R10 |
| E-MPCIE-CClink02-R10 | PCIe Mini card supports CC-Link Slave interface according to V2.0 and V1.1, with PMS black C I/O bracket and 300mm cable, R10 |
| E-MPCIE-PROFIBUS02-R10 | PCIe Mini card supports universal PROFI BUS DP card for Master or Slave, with PMS black C I/O bracket and 300mm cable, R10 |
| E-MPCIE-EtherCAT-R10 | PCIe Mini card supports universal for all Real-Time Ethernet protocols, with PMS black C I/O bracket and 280mm cable, R10 |
| E-MPCIE-3G-R10 | PCIe Mini card supports 3G WWAN, with PMS 130C I/O bracket, RF antenna 300mm cable and GSM antenna cable, R10 |

AFL3-W22C-ULT3 Fully Integrated I/O



AFL3-W22C-ULT3 Dimensions (Unit: mm)

